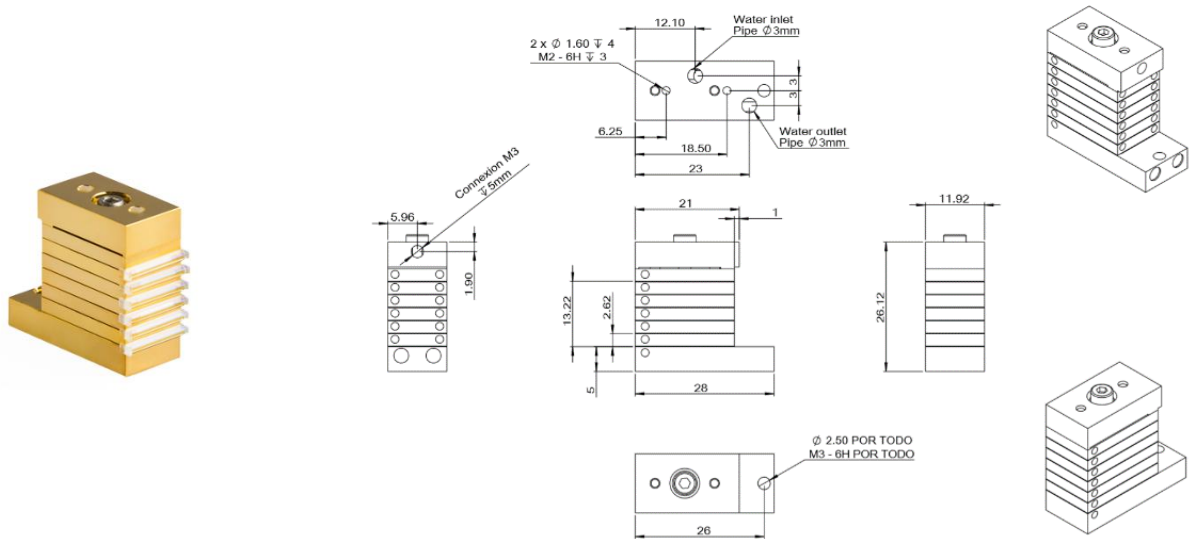


Actively Cooled Laser Bar Stack

A-Stack λ 1920-1960 nm



Features:

Improved cooling efficiency
 No “smile” effect
 Number of bars on demand
 Central wavelength on demand
 Real macro-channels cooling

Suitable for:

Interstitial laser induced thermotherapy
 Surgery
 Aesthetics
 Material processing

Technical specifications ^(1,2)	
Wavelength ⁽³⁾ [nm]	1920 - 1960
Wavelength tolerance [nm]	±20
Spectral width, FWHM [nm]	< 15
Wavelength shift [nm/K]	1.3
Output power per laser bar ^(2,4) [W]	up to 20
Operating current [A]	< 85
Differential slope, after threshold [W/A]	0.2 – 0.3
Voltage @ connectors ⁽⁵⁾ [V]	9 - 45
Bar to bar pitch [mm]	down to 2.5
Optics (optional)	FAC / SAC / BT
Bars per stack ⁽⁶⁾	1 - 10
Smile [µm]	< 0.1

- Specifications at 20 °C, at the beginning of the lifetime
- Specifications are subject to chips availability
- Other wavelengths on request
- Expected output power per laser bar can varies based on current and temperature
- Voltage from the power supply must be higher, as due to high current there will be a voltage drop in the cables
- Pitch dependent.

A-STACK / 1920 - 1960 nm
 Version: 1.0.0.0 October 2021
 Product specification are subject to change without notice.
 For complete details, please contact your local MONOCROM sales representative.

MONOCROM S.L.
 C/Vilanoveta 6
 08800 Vilanova i la Geltrú
 Spain

T. +34 938 149 450
 E. sales@monocrom.com
www.monocrom.com

UNE EN ISO 9001:2015