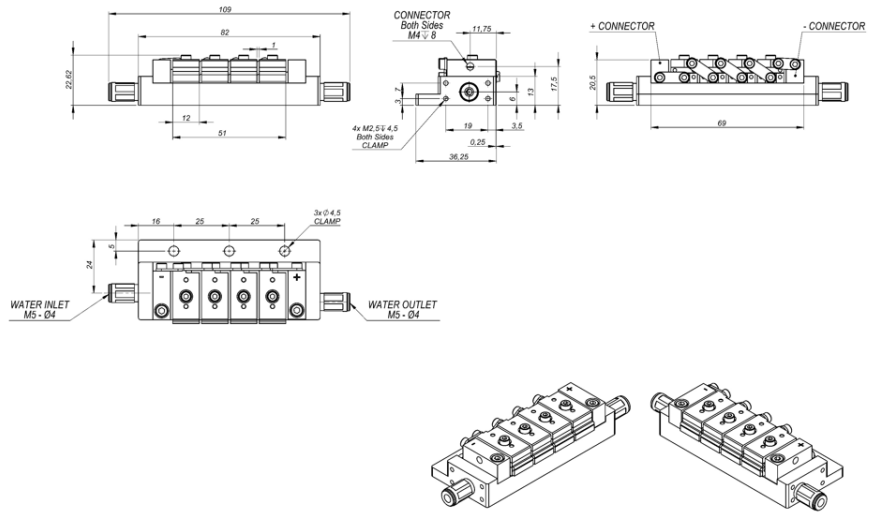


# Actively Cooled Linear Laser Array

LB04  $\lambda$ 640-2200 nm



## Features:

Improved cooling efficiency  
 No “smile” effect  
 Number of laser bars: 4  
 Central wavelength on demand  
 Real macro-channels cooling

## Suitable for:

Optical pumping  
 Illumination  
 Imaging

Technical specifications <sup>(1)</sup>	
Wavelength <sup>(2)</sup> [nm]	640 - 2200
Spectral width, FWHM [nm]	< 5
Stack peak power <sup>(3)</sup> [W]	CW 250 per laser bar / QCW 500 per laser bar
Operating current [A]	CW <180 / QCW <450
Voltage @ connectors <sup>(4)</sup> [V]	~ 2 per laser bar
Pitch between centers [mm]	12.5 - 13.5
Bar smile (PV) [ $\mu$ m]	< 0.3
Coolant flow [l/min]	1.5 - 2.0
Coolant pressure [bar]	2.5 - 3.5
Coolant temperature <sup>(5)</sup> [°C]	Non-condensing -25
Coolant	90% deionized water + 10% ethylene glycol
Electrical connections	2 x M4 threads
Water connections	2 x Ø 4 mm fittings
Expected lifetime	> 20000 h
Laser class (EN-60825)	4

- Specifications at 20°C, in the beginning of lifetime
- Maximum ratings are NOT all achievable at a time
- Number of Laser bars = 4
- Voltage from the power supply must be higher, as due to high current there will be a voltage drop in the cables
- The coolant temperature must be adjusted to get the right central wavelength according to the data supplied with each unit

LB04 / 640-2200 nm  
 Version: 1.0.0.0 October 2021  
 Product specification are subject to change without notice.  
 For complete details, please contact your local MONOCROM sales representative.

MONOCROM S.L.  
 C/Vilanoveta 6  
 08800 Vilanova i la Geltrú  
 Spain

T. +34 938 149 450  
 E. sales@monocrom.com  
[www.monocrom.com](http://www.monocrom.com)

UNE EN ISO 9001:2015